

# Keeper Kilcommon Upperchurch Wind Awareness Group



Edel Grace

# ATTACK<sup>of</sup><sub>the</sub> 126m TURBINES



# DAWN<sup>OF</sup><sub>THE</sub> DEVELOPER



# GONE WITH THE WIND



# Edel & Paul





**Grousehall**



Grousehall





# What's this?

- 22 turbines 126.5 m high, plus 2 masts plus substation
- 1 to be placed **less** than **500 m** from our house

# Planning- the promise!

## Planning- Our Purpose

The purpose of the Planning Section is to provide for the **proper planning** and **sustainable development** of the county, to promote and facilitate the development of **sustainable communities and enterprise**, and to ensure the **protection** of the natural and built heritage and amenity of the county.

**Tipperary County Council**

"To play our part as an independent national body in an **impartial, efficient and open manner**, to ensure that physical development and major infrastructure projects in Ireland respect the principles of **sustainable development, including the protection of the environment.**"

An Bord Pleanála

**Planning- the reality!**

Note: Maps and Drawings remain copyright of the originator.

Planning Application: 13510003

| Type                       | Comment          | # Files | Size     | DjVu                 |
|----------------------------|------------------|---------|----------|----------------------|
| Appeal                     | statutory notice | 21      | 29988 Kb | <a href="#">DjVu</a> |
| Appeal                     |                  | 1       | 90 Kb    | <a href="#">DjVu</a> |
| Appeal                     |                  | 2       | 175 Kb   | <a href="#">DjVu</a> |
| Appeal                     |                  | 1       | 98 Kb    | <a href="#">DjVu</a> |
| Appeal                     |                  | 2       | 1023 Kb  | <a href="#">DjVu</a> |
| Appeal                     |                  | 1       | 94 Kb    | <a href="#">DjVu</a> |
| Appeal                     |                  | 1       | 88 Kb    | <a href="#">DjVu</a> |
| Appeal                     |                  | 1       | 1259 Kb  | <a href="#">DjVu</a> |
| Application                |                  | 17      | 63828 Kb | <a href="#">DjVu</a> |
| Application                |                  | 1       | 67 Kb    | <a href="#">DjVu</a> |
| Application                |                  | 1       | 227 Kb   | <a href="#">DjVu</a> |
| Application                |                  | 2       | 140 Kb   | <a href="#">DjVu</a> |
| Decision                   |                  | 2       | 3073 Kb  | <a href="#">DjVu</a> |
| Drawings/Photos            |                  | 1       | 5503 Kb  | <a href="#">DjVu</a> |
| Further Info/Clarification |                  | 1       | 600 Kb   | <a href="#">DjVu</a> |
| Further Info/Clarification |                  | 1       | 50992 Kb | <a href="#">DjVu</a> |
| Further Info/Clarification |                  | 11      | 5181 Kb  | <a href="#">DjVu</a> |
| Further Info/Clarification |                  | 2       | 326 Kb   | <a href="#">DjVu</a> |
| Further Info/Clarification |                  | 2       | 1154 Kb  | <a href="#">DjVu</a> |
| Report - Environment       |                  | 1       | 146 Kb   | <a href="#">DjVu</a> |
| Report - Planner           |                  | 2       | 2176 Kb  | <a href="#">DjVu</a> |
| Report - Planner           |                  | 1       | 816 Kb   | <a href="#">DjVu</a> |
| Submission/Objection       |                  | 1       | 365 Kb   | <a href="#">DjVu</a> |
| Submission/Objection       |                  | 2       | 264 Kb   | <a href="#">DjVu</a> |
| Submission/Objection       |                  | 3       | 324 Kb   | <a href="#">DjVu</a> |
| Submission/Objection       |                  | 2       | 143 Kb   | <a href="#">DjVu</a> |
| Submission/Objection       |                  | 2       | 287 Kb   | <a href="#">DjVu</a> |
| Submission/Objection       |                  | 1       | 292 Kb   | <a href="#">DjVu</a> |
| Submission/Objection       |                  | 2       | 427 Kb   | <a href="#">DjVu</a> |
| Submission/Objection       |                  | 2       | 227 Kb   | <a href="#">DjVu</a> |
| Submission/Objection       |                  | 2       | 130 Kb   | <a href="#">DjVu</a> |
| Submission/Objection       |                  | 2       | 389 Kb   | <a href="#">DjVu</a> |
| Submission/Objection       |                  | 2       | 131 Kb   | <a href="#">DjVu</a> |
| Submission/Objection       |                  | 2       | 191 Kb   | <a href="#">DjVu</a> |
| Submission/Objection       |                  | 2       | 222 Kb   | <a href="#">DjVu</a> |
| Submission/Objection       |                  | 3       | 2050 Kb  | <a href="#">DjVu</a> |
| Submission/Objection       |                  | 2       | 148 Kb   | <a href="#">DjVu</a> |
| Submission/Objection       |                  | 2       | 143 Kb   | <a href="#">DjVu</a> |
| Submission/Objection       |                  | 2       | 423 Kb   | <a href="#">DjVu</a> |
| Submission/Objection       |                  | 2       | 389 Kb   | <a href="#">DjVu</a> |
| Submission/Objection       |                  | 2       | 476 Kb   | <a href="#">DjVu</a> |
| Submission/Objection       |                  | 2       | 227 Kb   | <a href="#">DjVu</a> |
| Submission/Objection       |                  | 2       | 141 Kb   | <a href="#">DjVu</a> |
| Submission/Objection       |                  | 2       | 1324 Kb  | <a href="#">DjVu</a> |
| Submission/Objection       |                  | 2       | 244 Kb   | <a href="#">DjVu</a> |
| Submission/Objection       |                  | 2       | 297 Kb   | <a href="#">DjVu</a> |
| Submission/Objection       |                  | 2       | 344 Kb   | <a href="#">DjVu</a> |
| Submission/Objection       |                  | 1       | 216 Kb   | <a href="#">DjVu</a> |
| Submission/Objection       |                  | 3       | 205 Kb   | <a href="#">DjVu</a> |
| Submission/Objection       |                  | 2       | 1644 Kb  | <a href="#">DjVu</a> |
| Submission/Objection       |                  | 1       | 267 Kb   | <a href="#">DjVu</a> |
| Submission/Objection       |                  | 1       | 252 Kb   | <a href="#">DjVu</a> |
| Submission/Objection       |                  | 1       | 308 Kb   | <a href="#">DjVu</a> |
| Submission/Objection       |                  | 2       | 326 Kb   | <a href="#">DjVu</a> |
| Submission/Objection       |                  | 1       | 186 Kb   | <a href="#">DjVu</a> |
| Submission/Objection       |                  | 5       | 337 Kb   | <a href="#">DjVu</a> |
| Submission/Objection       |                  | 1       | 102 Kb   | <a href="#">DjVu</a> |
| Submission/Objection       |                  | 1       | 685 Kb   | <a href="#">DjVu</a> |
| Submission/Objection       |                  | 1       | 61 Kb    | <a href="#">DjVu</a> |
| Submission/Objection       |                  | 3       | 203 Kb   | <a href="#">DjVu</a> |
| Submission/Objection       |                  | 2       | 230 Kb   | <a href="#">DjVu</a> |

These files are best viewed using the

DjVu Browser Plug-in

These files are best viewed using  
the  
DjVu Browser Plug-in  
Click on the icon below if you  
require this software.



# Major Issues

- Setback
- Noise
- Shadow Flicker
- Visual Impact (including Tourism)
- Property Devaluation
- Environmental Impact

# Noise

- Irish Wind Turbine Noise Guidelines
- The current outside night noise guideline in Ireland is 43dB (A) (D.O.E. 2006)
- World Health Organisation sets an upper limit of 40dB
- Low Frequency Noise
- UN Committee against Torture
- Monitoring & Enforcement

# Set back distance

- Guideline only- why?
- Currently 500m
- New Guidelines

# Shadow Flicker

- Under the current Irish Wind Energy Planning Guidelines (2006) it is “**recommended** that shadow flicker at neighbouring offices and dwellings **within 500m** should not exceed 30 hours per year or 30 minutes per day”. The guidelines allow up to 30 hours of shadow flicker per year per dwelling.
- Health & Safety
- Livestock
- Setback distance- Flicker effects have been proven to occur only within ten rotor diameters of a turbine.

# Set back distance

- Blade Failure
- Fire
- Collapse



# Blade Failure

Tursillagh Windfarm, Kerry 08 January 2015

The blade appears to have been blown about 100 metres from the turbine at Tursillagh near Tralee at the weekend before hitting the ground.

It is not known how the blade came away from the turbine, but damage to its tip suggests it hit the ground with force.



# Fire

Trent Windfarm, Sweetwater  
USA August 2014

“We don’t get near the turbine  
when it’s burning because pieces  
fall off and sometimes big pieces  
fall off” Sweetwater Fire Chief  
Grant Madden



Scotland  
Ardrossan, North Ayrshire,  
Scotland 2011

100 metre tall wind turbine  
catches fire in hurricane-  
force winds



# That wouldn't happen here

Cappaboy Beg Wind Farm in  
Co Cork on 19 June 2014

**A flaming 28-metre-long blade  
from one of the turbines flew  
as far as 100 metres away  
from the machine and landed  
close to nearby gorse and  
forestry.**



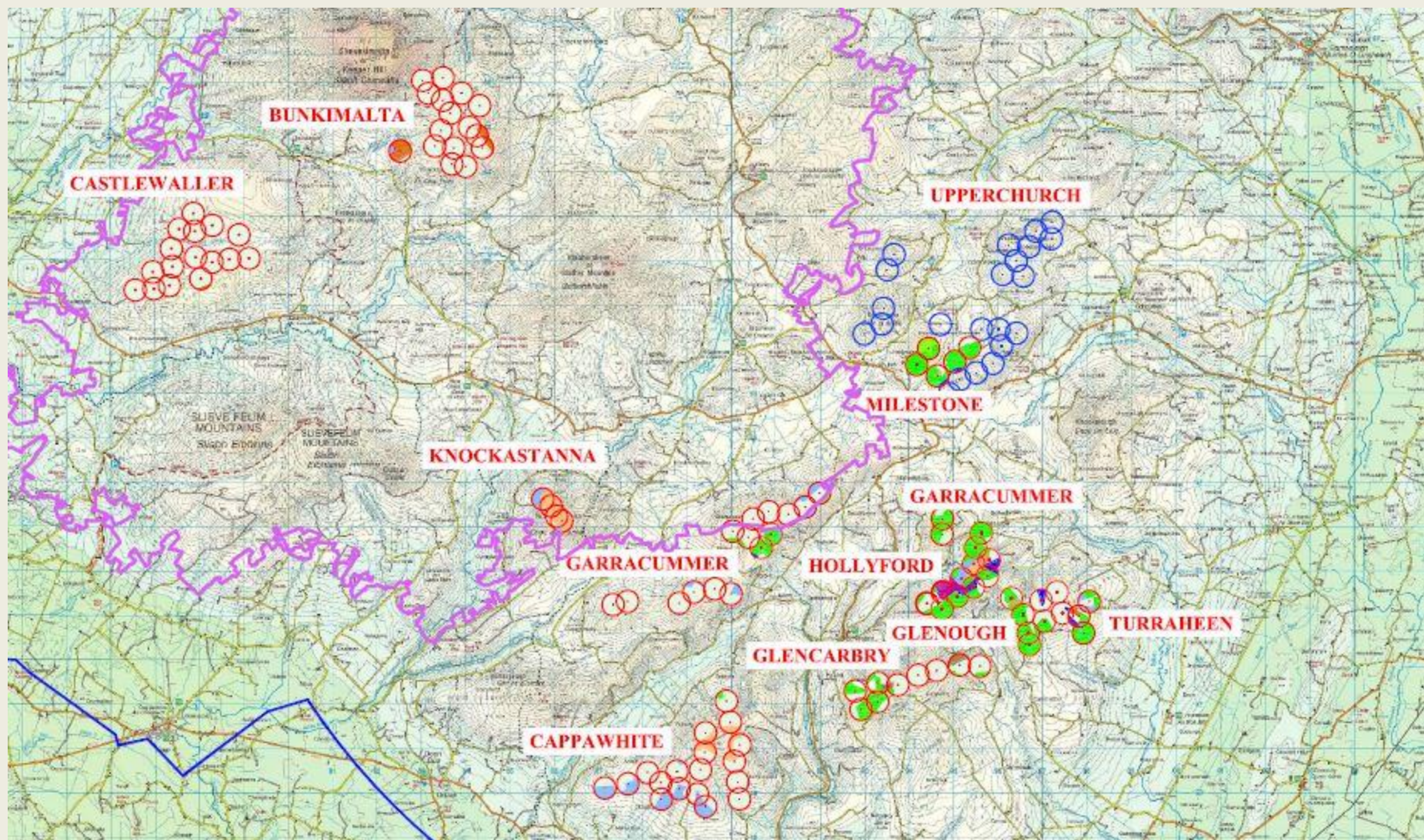
# Collapse



My favorite!

# Visual Impact





# **Tourism** View towards Dithmarschen in Germany 2009



**Mount Lucas Ireland 2014**

Wind farm beyond Stirling Castle, in Stirling



Wind turbines at Richfield Windfarm, County Wexford



# Property Devaluation



- 5 major reports
- Reduction anywhere from 11 to 40 %
- Deceptive – based on properties within 2km
- All agreed that the closer you live the bigger the drop
- Reduced property tax to County Councils

# Environmental Impact

- Birds, Bats & Wildlife
- Roads
- Construction & Concrete
- Peat land destruction
- Water



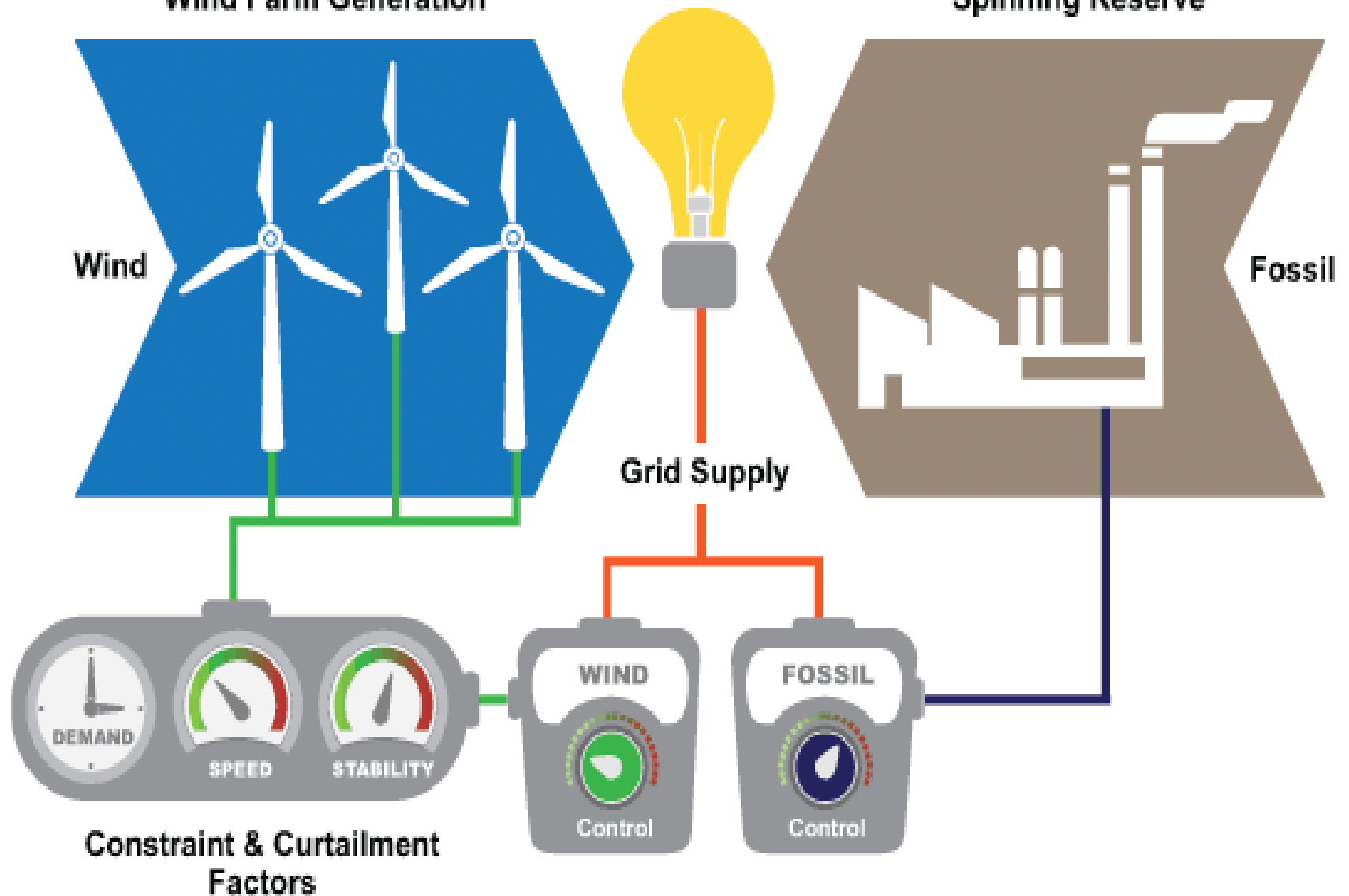




Derrybrien, Galway 2003

## Wind Farm Generation

## Spinning Reserve



# Grid Link



# Green



The lake of toxic waste at Baotou, China, which has been dumped by the rare earth processing plants in the background.

# Money



**€80 million wind farm near the Co  
Tipperary village of Upperchurch**

**BORD NA MÓNA  
LAUNCHES €115M  
WINDFARM ON BOG**

**Energy firm  
plans €100m  
wind farm**

**€80m wind farm gets nod  
on Keeper Hill**

**BORD GAIS GO-AHEAD FOR  
€90M WIND FARM**

# Landowner

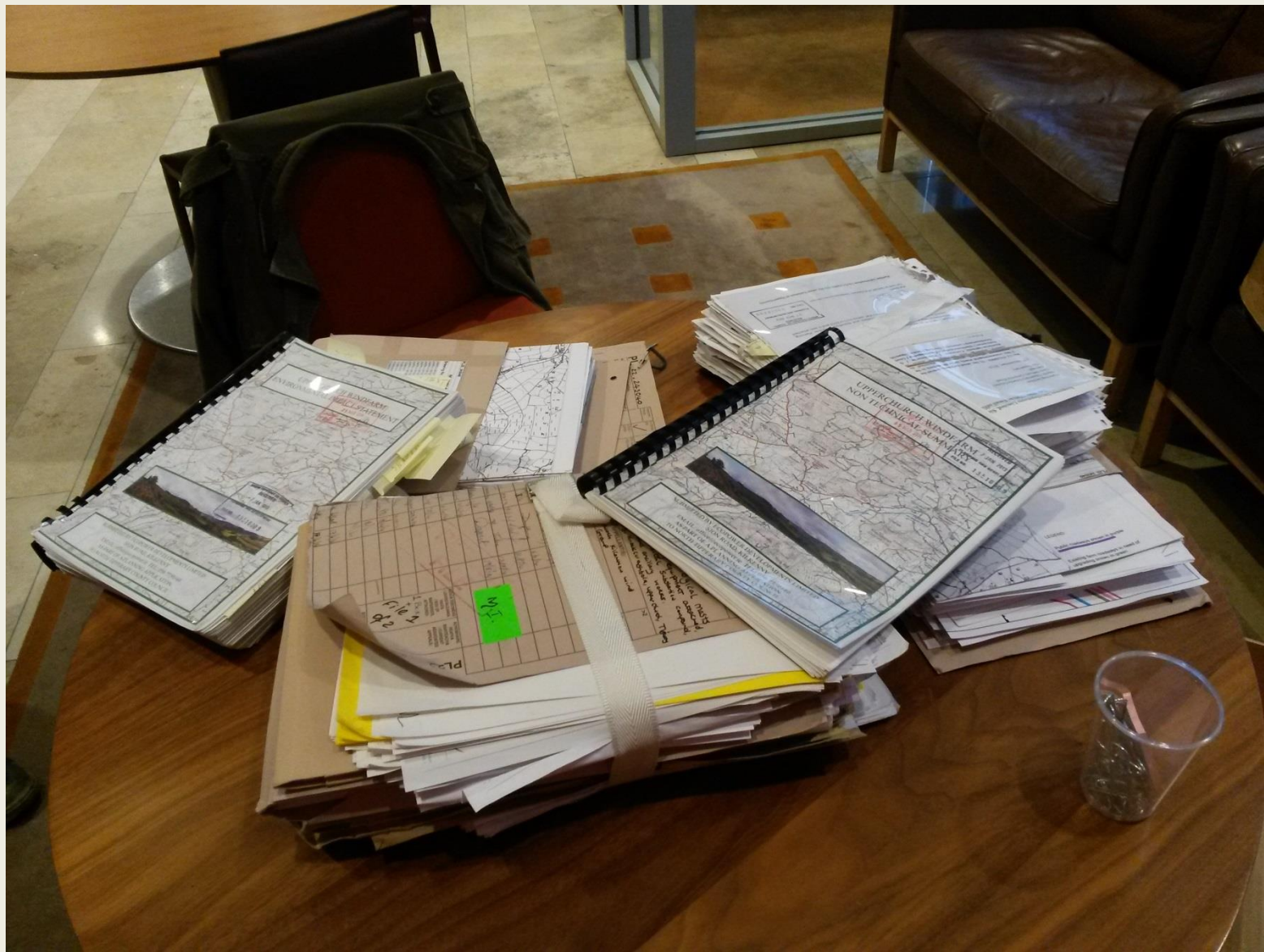
| Description   | €               |
|---|-----------------|
| <ul style="list-style-type: none"><li>• Approx. per turbine per year</li><li>• 25 years</li></ul> | €18,000<br>X 25 |
| <u>Subtotal</u>   | €450,000        |
| <ul style="list-style-type: none"><li>• Less Commercial Tax</li></ul>                             | -€148,500       |
| Total   | <b>€301,500</b> |

# Edel & Paul

| Description                      | €                   |
|----------------------------------|---------------------|
| • County Council Fee             | -€20.00             |
| • An Bord Pleanála Fee           | -€220.00            |
| • Profession help with Objection | -€1500.00           |
| • Ecology Assessment             | -€1380.00           |
| • Oral Hearing Fee               | -€50.00             |
| • Judicial Review Cost (approx.) | -€30,000.00         |
| <u>Subtotal</u>                  | -€33,170.00         |
| Devaluation of property          | -€120,000.00        |
| Total                            | <b>-€153,170.00</b> |

# Community

| Description                    | €             |
|--------------------------------|---------------|
| • Community Fund               | €40,000.00    |
| • X 25                         | X 25          |
| <u>Subtotal</u>                | €1,000,000    |
| Number of People               |               |
| (Upperchurch & Foilnamon only) | / 661         |
| Lifetime                       | €1512.85      |
| /25                            | /25           |
| <b>Total</b>                   | <b>€60.50</b> |



# Judicial Review



# GONE WITH THE WIND



**...Tomorrow is another day**